


CORRECTION

Open Access



# Correction: Polycystic ovary rat model exposure to 150 kHz intermediate frequency: hypothalamic-pituitary-ovarian axis at the receptor, cellular, tissue, and hormone levels

Stephanie Mohammed<sup>1\*</sup> , Venkatesan Sundaram<sup>2\*</sup>, Chalapathi R. Adidam Venkata<sup>3</sup> and Nikolay Zyuzikov<sup>1</sup>

**Correction:** *J Ovarian Res* 14, 173 (2021)

<https://doi.org/10.1186/s13048-021-00914-w>

The original article [1] contains errors in Figs. 3 and 7 which occurred during the compilation of the images into figures. Portions of the specified figures were duplicated within the article:

- Fig 3H EV = Fig 3H EMR
- Fig 6O EV = Fig 7O EV
- Fig 6O EMR+EV = Fig 7O control

Figures 3 and 7 have been corrected and shown in the following pages of this article

The authors sincerely apologize for the errors. The errors do not affect the conclusion of the article.

Published online: 17 May 2023

## Reference

1. Mohammed S., Sundaram V., Adidam Venkata C.R, et al. Polycystic ovary rat model exposure to 150 kHz intermediate frequency: hypothalamic-pituitary-ovarian axis at the receptor, cellular, tissue, and hormone levels. *J Ovarian Res.* 2021;14:173. <https://doi.org/10.1186/s13048-021-00914-w>.

The original article can be found online at <https://doi.org/10.1186/s13048-021-00914-w>.

\*Correspondence:

Stephanie Mohammed  
[Stephanie.Mohammed@sta.uwi.edu](mailto:Stephanie.Mohammed@sta.uwi.edu)  
Venkatesan Sundaram  
[Venkatesan.Sundaram@sta.uwi.edu](mailto:Venkatesan.Sundaram@sta.uwi.edu)

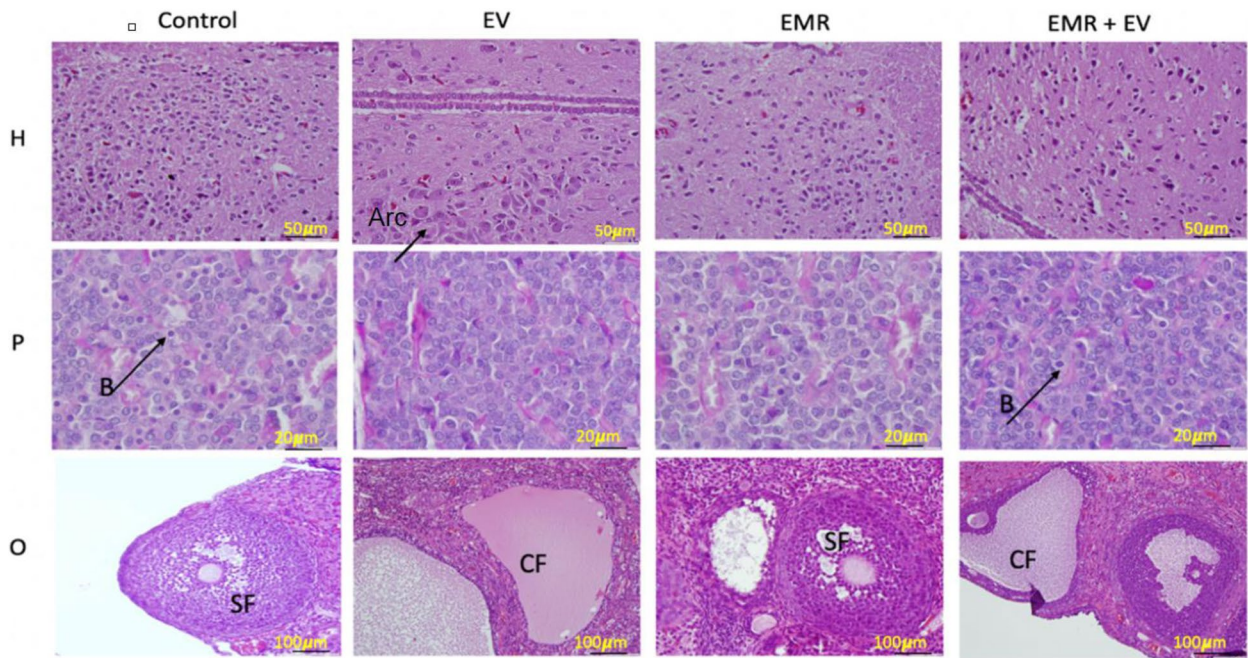
<sup>1</sup> Department of Physics, Faculty of Science and Technology, The University of the West Indies, St. Augustine, West Indies, Trinidad and Tobago

<sup>2</sup> Department of Basic Veterinary Sciences, School of Veterinary Medicine, Faculty of Medical Sciences, The University of the West Indies, St. Augustine, West Indies, Trinidad and Tobago

<sup>3</sup> Department of Clinical Medical Sciences, Faculty of Medical Sciences, The University of the West Indies, St. Augustine, West Indies, Trinidad and Tobago

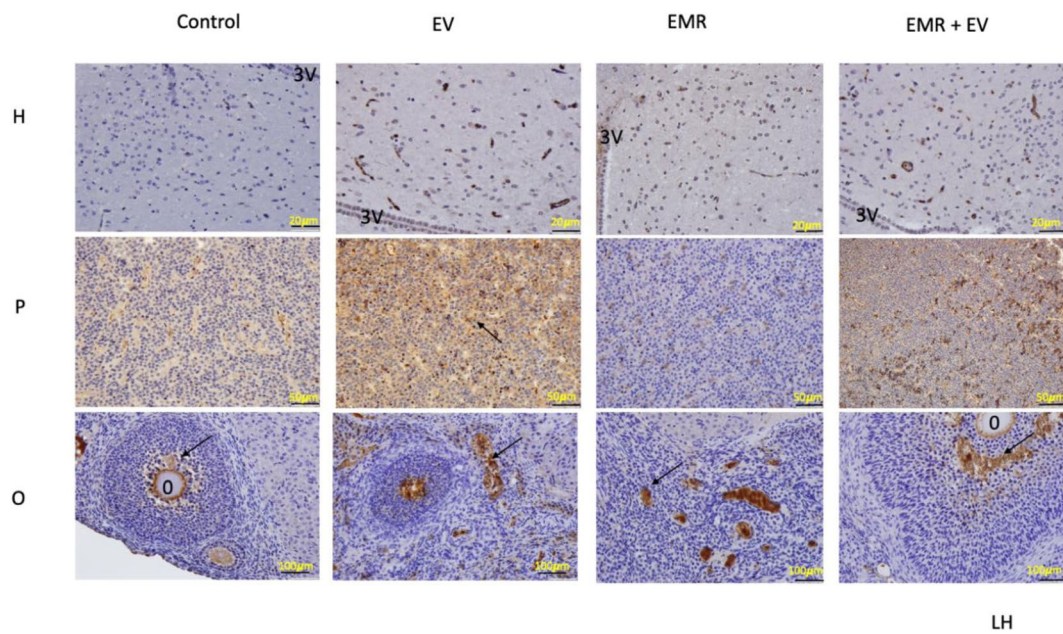


© The Author(s) 2023. **Open Access** This article is licensed under a Creative Commons Attribution 4.0 International License, which permits use, sharing, adaptation, distribution and reproduction in any medium or format, as long as you give appropriate credit to the original author(s) and the source, provide a link to the Creative Commons licence, and indicate if changes were made. The images or other third party material in this article are included in the article's Creative Commons licence, unless indicated otherwise in a credit line to the material. If material is not included in the article's Creative Commons licence and your intended use is not permitted by statutory regulation or exceeds the permitted use, you will need to obtain permission directly from the copyright holder. To view a copy of this licence, visit <http://creativecommons.org/licenses/by/4.0/>. The Creative Commons Public Domain Dedication waiver (<http://creativecommons.org/publicdomain/zero/1.0/>) applies to the data made available in this article, unless otherwise stated in a credit line to the data.



**Arc-arcuate nucleus; B- basophils; SF-secondary follicle; CF- cystic follicle**

**Fig. 3** Histology of the hypothalamus, pituitary, and ovary. The photomicrograph shows neurons of the arcuate nucleus (single cluster of cells), basophil cells (poorly basophilic stained cells) of the anterior pituitary, and secondary follicle (Control-normal, EV-cystic, EMR-degenerated, EMR + EV-thin layers of granulosa, and theca cells) among each group. Arc-arcuate nucleus; B-basophil cell; SF-secondary follicle; CF – cystic follicle



LH	Category:	Positive cells/High	Staining	Intensity
	Density	power field	Intensity	Score
<b>Control</b>				
H	Low	<10	Intermediate	2
P	High	>15	Intermediate	2
O	Low	<10	Intermediate	2
<b>EV</b>				
H	Low	<10	Intermediate	2
P	Low	<10	Intermediate	2
O	Low	<10	Intermediate	2
<b>EMR</b>				
H	Low	<10	Intermediate	2
P	High	10-15	Intermediate	2
O	Low	<10	Intermediate	2
<b>EMR + EV</b>				
H	Low	10-15	Intermediate	2
P	High	>15	Strong	3
O	Medium	10-15	Strong	3

**Fig. 7** Immunohistochemical analysis of LH reactive cells of the HPO axis. Photomicrograph showing the neurons in the arcuate nucleus around the third ventricle (3 V) in the hypothalamus (H), LH reactive cells in the pituitary (P), and matured follicles with oocyte (o) and a comparison of the theca and granulosa cell layers among each group. Simultaneously there is a table showing qualitative analysis for FSH reactive cells (brown color with arrow pointing) among the groups in the HPO axis. Table showing modified Allred scoring method